



The Sutton Academy



SIXTH FORM

SIXTH FORM PROSPECTUS

"STUDENTS BENEFIT FROM A BROAD RANGE OF OPPORTUNITIES TO ENHANCE THEIR PERSONAL DEVELOPMENT."

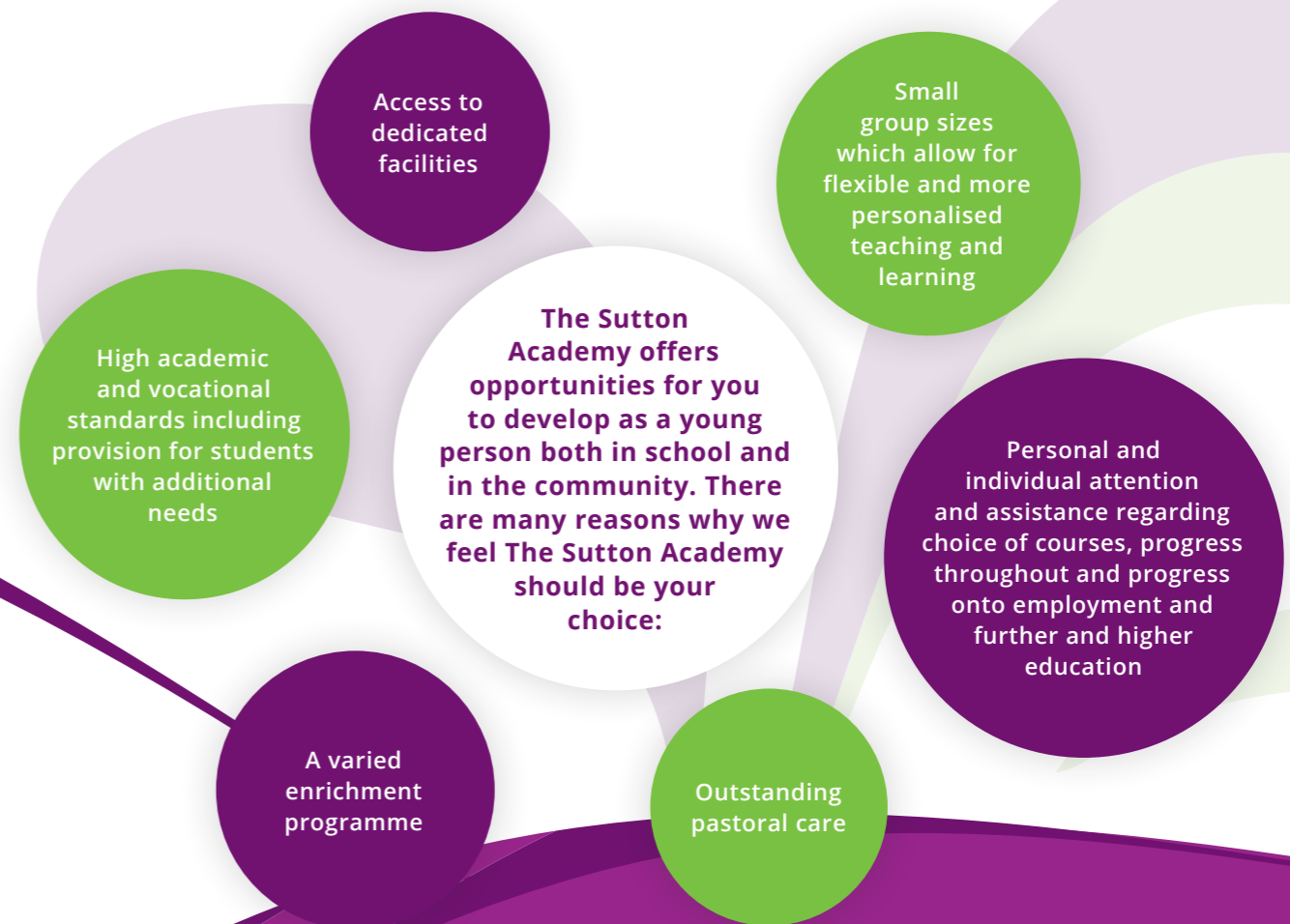
OFSTED 2019



WHY US?

WELCOME TO THE EXCITING RANGE OF SUBJECTS AND LEARNING OPPORTUNITIES WHICH AWAIT YOU AT THE SUTTON ACADEMY SIXTH FORM.

At The Sutton Academy Sixth Form we endeavour to provide all of our students with the support needed to achieve academic excellence. We also ensure that all of our students are provided with a wealth of opportunities to develop personally in areas such as leadership. Our aim is to equip you with skills and confidence needed to face the challenges of the world ahead, whatever your future aspirations may be.



"LEADERSHIP OF THE SIXTH FORM IS HIGHLY EFFECTIVE."

OFSTED 2019



WE ARE VERY PROUD OF OUR THRIVING SIXTH FORM AND ARE DELIGHTED THAT YOU ARE CONSIDERING JOINING US.



HERE ARE JUST A FEW OF THE COURSES YOU MAY CHOOSE TO STUDY WITH US...

ART, CRAFT AND DESIGN

A-Level Art, Craft and Design Students complete a two year course where they will explore practical and critical/contextual work through a range of 2D and/or 3D processes, Medias and techniques.

CHILDCARE

The Technical Level 3 Certificate in Childcare and Education provides learners with knowledge with children from birth to 7 years and practical experience working with children from birth to 5 years. All learners are required to have an Enhanced DBS. Learners are required to complete 365 hours of placement experience is recommended at this stage to underpin theoretical application of knowledge, support learners and prepare learners for the External Assessment CCE1.

ENGLISH

English A-Level at KS5, students are offered the opportunity to broaden their study of English at a higher level through AQA's English Language and Literature specification. During the two year A-Level course, students analyse a range of challenging and engaging literary and non-literary texts, informed by a secure understanding of linguistic theory and influences.

GEOGRAPHY

A-Level Geography is extremely engaging building on GCSE knowledge and further developing your understanding of the world. The course is extremely current and addresses many of the issues affecting the world today both politically and environmentally.

MATHEMATICS

A level Mathematics is an interesting and challenging course, which extends the methods and ideas you learned at GCSE. It prepares you well for university study and future employment. Maths helps supports the study of subjects like physics, chemistry, engineering, IT, economics, business and biology. Problem solving and modelling are key aspects of the course. Both the pure and applied mathematics that you will learn feeds into many future career pathways such as Architecture and Accountancy.

FOOD SCIENCE & NUTRITION

Students will have the opportunity to learn about the relationship between the human body and food, as well as developing practical skills linked to experimental work and the cooking and preparation of food. As part of the course, students will work with professional chefs, visit local businesses, taste new foods, critically assess diets and develop menus which are nutritionally balanced, conduct food experiments and develop a range of generic and transferable skills that are sought after by employers.

SPORT

The Level 3 National Extended Certificate in Sport provides students with a broad basis of study within the sport sector. Students will deepen their understanding through topics such as anatomy and physiology, lifestyle factors, leadership and career pathways in the sports industry.

HISTORY

A-Level History gives you the opportunity to develop the knowledge and skills gained at GCSE. The challenging and engaging topics studied are Tsarist and Communist Russia 1855 - 1964 and Modern British History 1951 - 2007. The coursework (NEA) can be guided by your own modern historical interests also.

HEALTH & SOCIAL CARE

The Technical Level 3 Certificate in Health and Social Care provides learners with an in-depth knowledge of core subject areas in health and social care and support progression into Higher Education. 75 work place hours are required in a relevant health and social care setting and all learners are required to have an Enhanced DBS.

PSYCHOLOGY

The A-Level Psychology course provides you with an opportunity to explore the work of some of the most influential psychologists in the world such as Sigmund Freud, Jean Piaget and Stanley Milgram including their infamous experiments.

"TEACHERS USE THEIR SECURE SUBJECT KNOWLEDGE TO SUPPORT AND CHALLENGE EACH STUDENT."

OFSTED 2019





SUPPORT & PASTORAL CARE

Support and pastoral care is based on personal relationships and an overall ethos of mutual respect, openness and care, supported by strong structures. Amid the pressures of A levels, it is imperative to us that we provide you with an environment in which you can be happy, confident and grow into the person you aspire to be.

Our Sixth Form understands the immense demands faced by our students in the world today and we pride ourselves on providing excellent pastoral care. At The Sutton Academy Sixth Form we have a dedicated team of Tutors who are here to support you throughout your time with us. They will always be on hand to support you with dedicated advice and guidance that will help build your confidence, resilience and independence.

CAREERS GUIDANCE

We offer bespoke careers and university advice throughout your time with us. We have a designated careers advisor and work closely with Shaping Futures to offer expert guidance from CV writing to Apprenticeship and University applications.

As a Sixth Form we have outstanding links with local higher institutions who visit our Sixth Form regularly to help with the UCAS process and offer guidance and support for the next stage of your educational journey. You will be involved in workshops and will visit Universities who will provide bespoke days tailored to our students.

STUDENT BURSARY

Students are encouraged to apply for a student bursary if facing financial hardship to stay in full time education. The bursary can be used to help purchase course equipment needed and meet transport costs. Free meals are also available for those who meet the eligibility criteria.

SUPPORT AGENCIES

We have a monthly visit from outside agencies which students can access as needed. All appointments are treated in the strictest of confidence.

FACILITIES & ENVIRONMENT

We treat all of our Sixth Form students as mature young adults. With this in mind we provide you with dedicated spaces to study, learn and socialise with other students. Our excellent study facilities will ensure you make the most of your chosen subjects, including specialist art and design work areas, laboratories for you to explore the sciences, access to a dance studio and theatre for drama performances as well as a fully equipped recording studio.

You will also have access to dedicated study areas, fully equipped with the latest ICT equipment, allowing you to extend your learning outside of normal lesson times. Our directed study area provides you with a relaxed learning space to study with other students whereas our silent study area allows you to work undisturbed.

Our sixth form centre also benefits from its own dining area that students can access throughout the day and offers both hot and cold food from 10:30 am until 1.30 pm.



ENHANCEMENT

UNIVERSITIES, COLLEGES AND EMPLOYERS ARE INTERESTED IN WELL-ROUNDED STUDENTS WITH THE INITIATIVE AND PERSONAL SKILLS TO FACE THE MODERN WORLD. WITH THIS IN MIND, WE OFFER YOU A RANGE OF OPPORTUNITIES AND ENRICHMENT ACTIVITIES.



"STUDENTS STUDY COURSES THAT ARE WELL SUITED TO THEIR INTERESTS, APTITUDES AND AMBITIONS." OFSTED 2019

SIXTH FORM TUTORIAL PROGRAMME.

When students leave us to go into Higher Education or employment, they will be expected to be capable of organising themselves and setting their own targets. The Sixth Form is therefore an important part of your transition to the next stage in your academic career, and we will support you to develop the appropriate skills and qualities needed through the tutorial programme.

The programme focuses on A-Level mindset and the preparation for Higher Education and employment using activities that enable study and self-management skills and allow students to think about their career and preparation for employment or Higher education.

ACTIVITIES INCLUDE:

OPPORTUNITIES TO WORK WITH YOUNGER STUDENTS, mentoring in mathematical and reading skills and joining up with the Year 11 Student Council.

NATIONAL CITIZEN SERVICE, the opportunity to undertake voluntary work which is widely admired by employers and universities.

DUKE OF EDINBURGH AWARD, the opportunity to get involved, leading to expeditions, skill development and service to the community.

TRIPS AND VISITS, both educational and rewarding, including access to a wide range of outside speakers.

THE SIXTH FORM STUDENT LEADERSHIP TEAM, students are invited to serve on the Sixth Form Council, enabling them to discuss school matter, both academic and social with senior members of staff.

WORK EXPERIENCE, to enhance applications to university and future employers. At The Sutton Academy we feel that this opportunity will allow you to investigate a particular career path or profession in which you may have an interest. Universities view work experience as a vital addition to the UCAS application and personal statement. For students that do not intend to go onto university, this will be an essential complement to their CV.

THE EXTENDED PROJECT QUALIFICATION (EPQ), This is an extra qualification offered that provides an opportunity for students to extend your abilities beyond the A-level syllabus and prepare for university or their future career. It can also be used to earn extra UCAS points and is worth 50% of an A-level.

JOINING US

Here at The Sutton Academy Sixth Form we offer a wide range of both academic and vocational courses and aim to offer students a high degree of flexibility when choosing your ideal combination of subjects.

The basic entry level for our Sixth Form is five GCSEs grade 4 and above or equivalent, however please refer to individual course overviews for any specific subject entry requirements.

If you would like to join us, the Sixth Form Application Form is available to download from our Academy website. You can contact a member of the Sixth Form Team or your Academy career's adviser if you need support and advice in completing the form.



DESTINATIONS

The majority of our students progress to university, with many taking up places at prestigious universities. An increasing number of our students are choosing not to go to university and they are equally successful in gaining apprenticeships or employment in exciting industries.



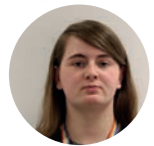
Amy Poole
Edge Hill University
BA Hons Primary
Education with QTS



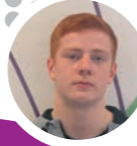
**Natasha
Prescott**
**Manchester
Metropolitan
University** BSC Hons
in Zoology



Leonie Hanlon
**University of
Liverpool**
BSC Hons in Psychology



Jayde Ball
**University of
Plymouth**
BA Hons in Journalism



Callum Stevens
**Nottingham Trent
University**
LB Hons in Law

"THE RANGE OF QUALIFICATIONS ON
OFFER PROVIDES STUDENTS WITH
CLEAR PATHWAYS TO A BROAD RANGE
OF FUTURE DESTINATIONS."
OFSTED 2019



The Sutton Academy



The Sutton Academy

ELTON HEAD ROAD ST. HELENS MERSEYSIDE WA9 5AU
01744 678859 • WWW.THESUTTONACADEMY.ORG.UK

