



The Sutton Academy

Anti-Smoking Policy

Status	Non-Statutory
Responsible Governors' Committee	ALT
Date last approved by GB	Not Applicable
Responsible Person	Ms G Medare
To Review Date	October 2022
Last Amended Date	October 2020

The Sutton Academy regards itself as a health-promoting organisation and as such seeks to:

- Protect the staff, children and young people and visitors from the effects of tobacco smoke and electronic cigarettes
- Provide a healthy environment for employees and students.
- Acknowledge the educational role of the organisation in discouraging children and young people from starting to smoke.
- Provide a positive role model in relation to smoking, which is consistent with the taught curriculum.

Introduction

The Sutton Academy is a non-smoking site. This policy identifies how the academy will continue to maintain a smoke free environment within and near the academy grounds for the benefit of students, staff, visitors, parents & carers as well as members of the public.

The academy will continue to encourage and support students to stop smoking through PSHE and will take a proactive stance against smoking through the use of support, guidance and sanctions

Rationale

Passive smoking is a health and safety issue for all adults in the workplace, leading to increased costs to the academy through sick pay, absenteeism and loss of productivity. Children and young people are more susceptible than adults to the effects of passive smoking. 17,000 children under the age of five are admitted to hospital every year in the UK as a result of breathing second hand smoke. Associated illnesses include bronchitis, pneumonia, asthma and other respiratory problems.

Policy Strategy

The academy is a designated no-smoking site and everyone involved with the academy community is expected to adhere to the Anti-smoking Policy. Those groups are:

- Employees
- Student Teachers
- Students
- Voluntary helpers
- Governors
- Visitors
- Contractors working on site
- Individuals using the leisure facilities
- Individuals attending an outside letting
- Individuals attending a social event

In accordance with the School's Anti-smoking Policy, the following will apply:

Students

- Students are not allowed to smoke at academy or whilst engaged in any off-site activity.
- Students are not allowed to smoke near the academy site
- Students should not smoke whilst travelling to or from school.

Staff

- Staff are recognised `role models` and as such are required not to smoke in sight of students. This will include visits, academy excursions etc. and include both teaching and non-teaching staff.
- This spirit of this policy will also apply to employees whilst exercising direct responsibility for students on off-site activities, e.g. in the academy mini-bus, academy fixtures etc.

Visitors

- The anti-smoking policy applies to all visitors to the academy including suppliers, supply or temporary staff and contractors.

Parents and Carers

- It will be requested that Parents and Carers adhere to the Anti-Smoking Policy and refrain from smoking on the academy grounds.

Events

- The school's Anti-smoking policy applies to all social events
- Where events are booked by outside agencies, all parties are to be made aware of the school's Anti-smoking policy

Students and those associating themselves with, who are found smoking on, or near, the academy site.

Any student found smoking on, or near, the academy premises, will follow the Academy's behaviour stage system and in addition be issued with 1 day in internal exclusion. Parents / Carers will be informed via letter and a telephone call. Students who are associating themselves with other students who are smoking will also be sanctioned following the academy behaviour system.

If a student is caught smoking on more than one occasion, they will continue through the Academy's behaviour system, be issued with an internal exclusion period. Parents will be invited in to meet with a member of ALT and the Year Team, the student and parent will be asked to sign a Smoking Contract.

Persistent smoking after exclusions may result in Permanent Exclusion. Students who are found smoking on or near the academy site will be offered further advice/support from the academy nurse.

Education

The Sutton Academy educates students about the reasons for and dangers of smoking. This takes place mainly in PSHE lessons in Year 7 to 11. The issues surrounding the use of smoking and drugs are further reinforced in the subsequent Year Groups, building upon the understanding gained in Year 7 with reference to other drugs for example, alcohol. Health and risk factors are reinforced throughout students' academy careers.

Useful Website / Helplines

<http://www.nhs.uk/livewell/smoking/Pages/Teensmokersquit.aspx>
http://www.childrenfirst.nhs.uk/teens/life/features/health_illnesses/giving-up-smoking.html
<http://www.ash.org.uk/>

Anti-Smoking Help line 0800 169 0169 NHS Anti-Smoking line 0800 022 4 332

Example Letter sent home for student reported/ caught smoking on or near the Academy premises:



Email: contact@thesuttonacademy.org.uk Website: www.thesuttonacademy.org.uk

Principal: Mr Paul Willerton

Dear _____

As a result of being reported smoking on the school grounds, I am writing to inform you that I have placed your child, _____, in Internal Exclusion fordays. *If your child is entitled to a free school meal, a meal will be provided during the day. However, if they stay for a paid lunch, I would ask that you help support our efforts by providing your child with a packed lunch.*

Apart from the actions of your child being illegal, in our efforts to support the continued education and personal welfare of our students, we take a harsh line on factors that can have an impact on their future well-being and particularly wish to discourage children who may be smoking from developing their habit further.

As it is illegal for shops to sell cigarettes, tobacco or cigarette papers to anyone under the age of 18, I would encourage you to hold conversations with your child to establish from where they obtain their cigarettes and, if you should suspect somebody to be supplying your child with cigarettes, that you report their activity to Crimestoppers on 0800 555 111, or via their website www.crimestoppers-UK.org.

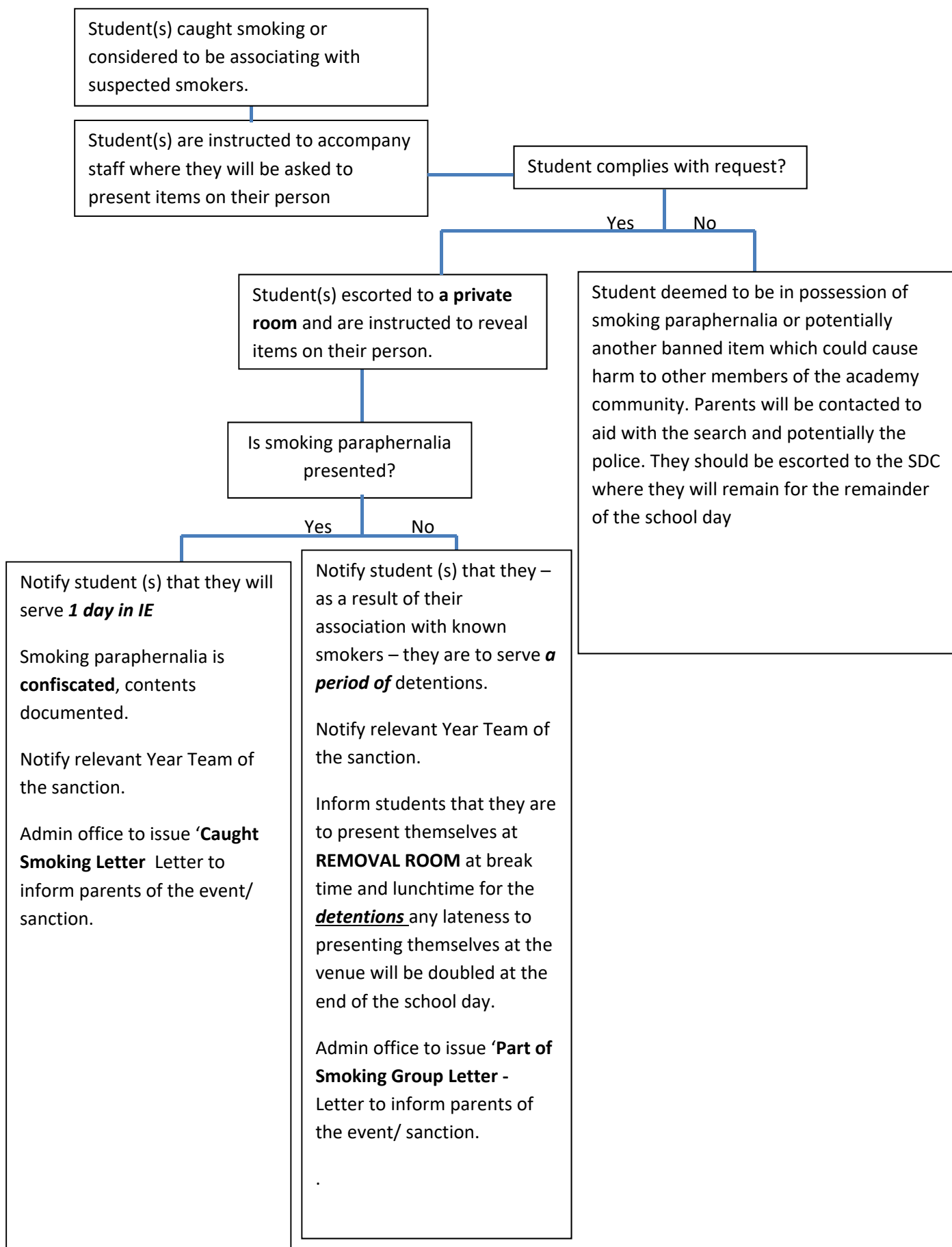
Advice and guidance on how to stop smoking can also be found at www.nhs.uk/smokefree.

I would like to thank you for your support with this important issue.

Yours sincerely

Ms Medare
Assistant Principal

Student Caught Smoking



The Sutton Academy

Smoking Contract

Student Name: _____

Tutor Group: _____

This acceptable behaviour contract has been instigated as a result of the student's persistent failure to comply with the academy's rules on smoking. The academy rules are clear that students are not allowed to smoke on the school site or bring smoking materials onto the school site.

As a result, they are now on an Acceptable Behaviour Contract. From the date of this contract, the student will have broken the terms of this contract if they are: -

- a) Seen smoking or using an e-cigarette
- b) Seen with a cigarette or lighter or matches in their possession
- c) Found to have cigarettes and/or other smoking materials in their possession.
- d) Associate themselves with others who have been caught in the act of smoking.
- e) Seen smoking by a member of staff in the vicinity of the academy in uniform. This includes Lea Green train station, Sherdley Park and Elton Head Road.
- f) Seen around the back of school during lesson changeover time.
- g) Seen behind the Mound area of the school grounds.

Breaking the terms of the contract will mean the student will receive a 60 minute same day detention in the IE room. The student's parent / guardian will be notified of the consequence by a member of school staff.

Persistent failure to comply with the terms of this Acceptable Behaviour Contract could result in an exclusion from the academy.

In extreme cases where the academy sanctions appear to be having no effect on certain students and their smoking behaviour, parents may be asked to collect and supervise their child over the periods of free time or when the smoking is taking place.

Signed:

(Student)

(Parent)

(Academy staff)

Date of contract