

PERFORMING ARTS

WHAT DO I NEED TO STUDY THIS COURSE?

The entry requirements for this course are 5 GCSEs at grade 4 or above including Maths and English Language and ideally a grade 4 in Drama. You must have a passion for performance and be willing to work as part of a theatre company.

IS THIS COURSE FOR ME?

This course develops the skills and knowledge required for those who wish to pursue a career in the world of the Performing Arts. You will undertake a Level 3 BTEC Extended Certificate in Performing arts, which is the equivalent to 1 A-Level. You will also receive the equivalent UCAS points as an A-level. You will study 4 units of which, 3 are mandatory and 2 are external.

WHERE WILL THIS COURSE TAKE ME?

This course will set you in good stead should you wish to undertake a degree level of study or a Higher National Certificate/Diploma at university or H.E. college. The BTEC level 3 Extended Certificate will develop your practical performance skills, as an actor on stage, your roles and responsibilities as a member of a theatre company and how to interpret a range of repertoire and practitioners.

WHAT WILL I LEARN?

Year 1

- **Unit 1 – Investigating Practitioners work** – You will study a range of key practitioners and their influence upon theatre practice.
- **Unit 2 – Developing skills and techniques for live performance** – for this unit, you will study a wide range of styles of theatre and how to apply them for live performance.

Year 2

- **Unit 3 – Group performance workshop** – is the final unit you will study, in which you and your fellow cast will produce and stage a large scale production for a public audience.
- Your optional unit will be selected based upon the groups' strengths and preferences, and you may choose from acting styles, Improvisation, theatre in the community, musical theatre and many more.



HOW WILL I BE ASSESSED?

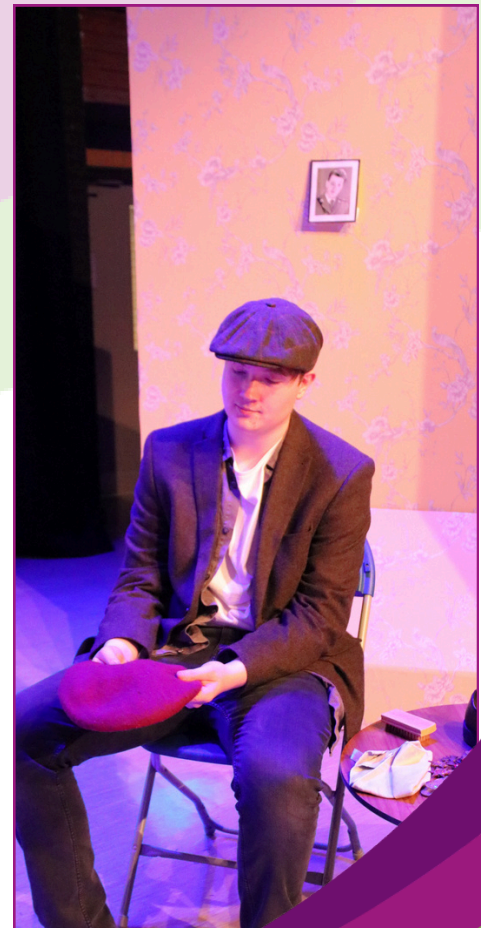
4 units - of which, 3 are mandatory and 2 are external.

Unit 1 – Investigating Practitioners work – Externally assessed.

Unit 2 – Developing skills and techniques for live performance – Internally assessed.

Unit 3 – Group performance workshop – Externally assessed.
Optional unit – Internally assessed.

The BTEC National Certificate offers students the opportunity to re-submit assignments in order to achieve their fullest potential.



**FURTHER
INFORMATION
SPEAK TO
MR HUGHES**